



**Performance Systems**



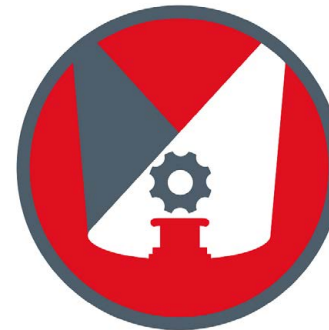
**Products & Services**



THE QUEEN'S AWARDS  
FOR ENTERPRISE:  
INNOVATION  
2020



Professional  
**MotorSport**  
WORLD EXPO 2023  
**AWARDS**



THE  
PRODUCT  
SHOWCASE  
AWARDS  
**AUTOSPORT**  
INTERNATIONAL

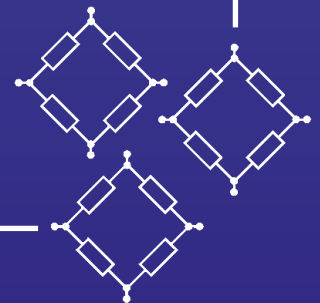
# EEC Performance Systems

With over 35 years in the weighing industry, we at EEC Performance Systems manufacture the superior quality range of f-POD Intelligent Race Fuel Bowsers, Wi-POD Wireless Corner Weight Scales and the E-POD Endurance Fuel Stop System.

Supplying professional motorsport teams worldwide in all major race series, we are the leading experts with an enviable reputation for our superior UKCA & CE marked products, designed and manufactured in Great Britain, combined with our first class customer service.

With our UK base and technical support, we offer much more than anyone else in the market and have now become the 'Go To Company' for any fuel bowser and car set up requirements. We offer a range of machines to suit all applications and budgets including bespoke, custom built models.

Winners of the Queens Award for Innovation and two prestigious Autosport Product Showcase Awards for Innovation and Data & Measurement, we are synonymous within the industry as pioneers, implementing ground-breaking technology supporting our customers to reach their full potential.



# f-POD eco



## Innovation

EEC Performance Systems identified the need for an economy, entry level fuel bowser, to satisfy some of today's cost conscious race teams.

Whilst maintaining all of the safety features of senior f-POD Max and f-POD Ultra models, EEC designed a low priced machine with very simple, intuitive controls to provide quick and efficient fuel transfer. The f-POD ECO.

The f-POD ECO features a large 28mm red LED display for easy viewing. A single push button toggles between the 'fuel gauge', which displays the contents of the bowser's tank and the 'T' (tare) which sets the weight display to '0' making it ready to dispense or receive fuel.

Inspired graphics prompt the operator; pressing the 'green' button sends fuel to the car and pressing the 'red' button draws fuel from the car. Releasing the button during transfer pauses the process.

## Accuracy

The f-POD ECO employs the highest quality weighing components. This ensures fuel delivery and reception, in and out of the bowser within a repeatable accuracy of 0.05kg, which means you can always be confident with your race fuel calculations.

## Safety

The f-POD ECO is constructed with total safety a priority.

All of the electronic components and battery are housed in a sealed steel cabinet to eliminate any possible spark risk. The pump utilises an explosion proof motor with ancillary components carefully selected.

The f-POD Eco includes an antistatic bonding lead to keep the car and bowser at the same potential throughout the fuelling process.

Fuel transfer is by high quality hoses which are included in our price! The heavy duty fuel tank is totally sealed in normal conditions featuring an Over/Under Pressure Relief Valve with Vapour Capture.

The substantial flight case housing sits on the highest quality, low friction, anti-static wheels.

The f-POD Eco is both CE & UKCA marked and meets all current directives.

# Economy Fuel Bowser

## Specification Includes:

- Large 30mm Red LED Display
- Simple Push To Pump Control
- 80kg Capacity Heavy Duty Sealed Tank
- Fuel Tank Under/Over Pressure Protection
- 30 Litre/min Flow Rate Explosion Proof Pump
- High Quality 210 Hoses with AN Fittings
- Internal 12VDC Rechargeable Battery
- Low Friction Anti-Static Wheels
- Heavy Duty Flight Case Housing
- Auxiliary Battery Socket

## Options

- lbs Weight Units
- Dry Break Couplings
- Car Pump - Pump Out
- Alternative Capacities: 100kg & 145kg
- Telescopic Safety Drum Adaptor
- Padded Travel Cover



# f-POD ultra



## Innovation

EEC Performance Systems' constant programme of development provides software control that is second to none.

The 7" full colour touch screen PC, combined with inspired, step by step graphical instructions, means that by using the f-POD Ultra, refuelling errors are a thing of the past.

The f-POD Ultra can run multiple drivers simultaneously, recording a data history which is available to view instantly on screen, remotely on any device via WiFi & downloadable via USB for further analysis.

Latest software brings remote fuel requests, where the engineers can send a fuel request to the f-POD direct from their laptop!

## Accuracy

The f-POD Ultra employs the highest quality weighing components. This ensures fuel delivery and reception, in and out of your cars' fuel cell, within a repeatable accuracy of 0.05kg, which means you can always be confident with your race fuel calculations.

The f-POD Ultra employs clever routines to adjust for an empty or full fuel hose, recording precisely actual fuel in and out of your car every time.

Our unique Automatic Track Compensation system, ATC, ensures the f-POD Ultra weighs your fuel accurately at any circuit in the world without the need for local recalibration.

## Safety

The f-POD Ultra is constructed with total safety a priority.

All of the electronic components and battery are housed in a sealed steel cabinet to eliminate any possible spark risk. The pump utilises an explosion proof motor and ancillary components are carefully selected.

The programmable 'Push to Pump' button can be configured for all processes, stopping the pump immediately upon release. The f-POD Ultra includes an antistatic bonding lead to keep the car and bowser at the same potential throughout the fuelling process.

Fuel transfer is by high quality hoses which are included in our price! The heavy duty fuel tank is totally sealed in normal conditions featuring an Over/Under Pressure Relief Valve with Vapour Capture.

The substantial flight case housing sits on the highest quality, low friction, anti-static wheels.

The f-POD Ultra is both CE & UKCA marked and meets all current directives.

# Intelligent Fuel Bowser

## Specification Includes

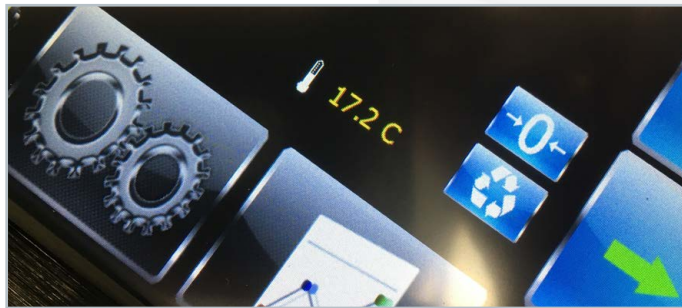
- 7" Colour Touch-Screen Control Panel
- ATC Automatic Track Compensation
- Switchable kg or lbs Weight Units
- Simultaneous Multicar Use
- WiFi Connectivity
- Remote Fuel Requests
- Remote Access to Reports
- Remote Support & Updates
- Comprehensive Downloadable History
- Fuel Tank Under/Over Pressure Protection
- 80kg Capacity Fully Sealed Tank
- Explosion Proof Pump Motor
- 30 Litre/min Flow Rate Pump
- High Quality 210 Hoses with AN Fittings
- Internal 12VDC Rechargeable AGM Battery
- Onboard Intelligent Battery Monitor
- Heavy Duty Flight Case Housing
- Low Friction Anti-Static Wheels
- Auxiliary Battery Socket

## Options

- Dry Break Couplings
- Car Pump - Pump Out
- Fuel Temperature Display & Logging
- Alternative Capacities: 100kg & 145kg
- Telescopic Safety Drum Adaptor
- Padded Travel Cover



# f-POD max



## Innovation

EEC Performance Systems' constant programme of development provides software control that is second to none.

The 7" full colour touch screen PC, combined with inspired, step by step graphical instructions, means that by using the f-POD Max, refuelling errors are a thing of the past.

The f-POD Max can run multiple drivers simultaneously, recording a data history which is available to view instantly on screen, remotely on any device via WiFi & downloadable via USB for further analysis.

Latest software brings Remote Fuel Requests, where the engineers can send a fuel request to the f-POD direct from their laptop!

## Accuracy

The f-POD Max employs the highest quality weighing components. This ensures fuel delivery and reception, in and out of your cars' fuel cell, within a repeatable accuracy of 0.05kg, which means you can always be confident with your race fuel calculations.

The f-POD Max employs clever routines to adjust for an empty or full fuel hose, recording precisely actual fuel in and out of your car every time.

Our unique Automatic Track Compensation system, ATC, ensures the f-POD Max weighs your fuel accurately at any circuit in the world without the need for local recalibration.

## Safety

The f-POD Max is constructed with total safety a priority.

All of the electronic components and battery are housed in a sealed steel cabinet to eliminate any possible spark risk. The pump utilises an explosion proof motor and ancillary components are carefully selected.

The programmable 'Push to Pump' button can be configured for all processes, stopping the pump immediately upon release. The f-POD Max includes an antistatic bonding lead to keep the car and bowser at the same potential throughout the fuelling process.

Fuel transfer is by high quality hoses which are included in our price! The heavy duty fuel tank is totally sealed in normal conditions featuring an Over/Under Pressure Relief Valve with Vapour Capture.

The f-POD Max is constructed with a substantial aluminium frame and gloss white panels which sit on the highest quality, low friction, anti-static wheels.

The f-POD Max is both CE & UKCA marked and meets all current directives.



# Intelligent Fuel Bowser

## Specification Includes

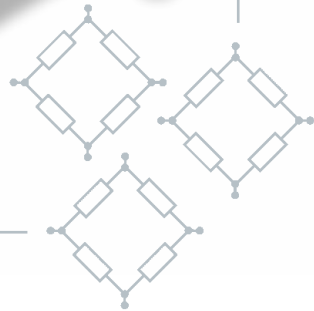
- 7" Colour Touch-Screen Control Panel
- ATC Automatic Track Compensation
- Simultaneous Multicar Use
- WiFi Connectivity
- Comprehensive Downloadable History
- Remote Fuel Requests
- Remote Access to Reports
- Remote Support & Updates
- 80kg Capacity Heavy Duty Tank
- Explosion Proof 30 Litre/min Flow Rate Pump
- Fuel Tank Under/Over Pressure Protection
- Internal 12VDC Rechargeable Battery
- Onboard Intelligent Battery Monitor
- Low Friction Anti-Static Wheels
- High Quality Superlite Hoses
- Heavy Duty Modular Housing
- Auxiliary Battery Socket

## Options

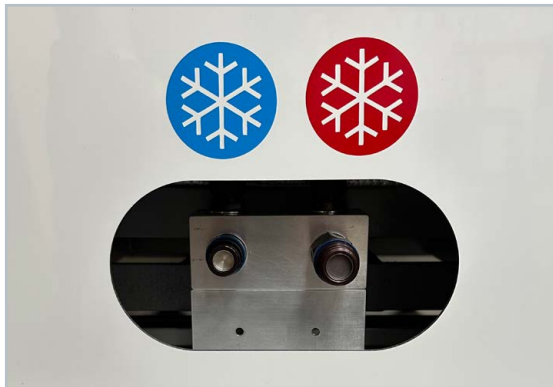
- On Board Temperature Logging
- Bi-Directional 8 Micron Filters
- 50 Litre/min Flow Rate Pump
- External Chiller Connection
- Anti-Siphon Control
- Custom Start Screen
- Car Pump - Pump Out
- Dry Break Couplings
- Other Capacities
- Custom colours
- Safety Drum Adaptor



UK  
CA | CE



# f-POD custom



## Custom Design & Build

EEC Performance Systems' level of expertise means we can offer a custom design and build service to give your team a further edge when it comes to fuelling.

We have supplied custom f-POD machines to manufacturer works teams including BMW, Aston Martin F1, NISMO.

Working closely with your engineers, we can supply machines to your exact specification, whether it be dimensional, functionality, performance or a combination of all three.

For custom machines we prefer to use a modular anodised aluminium frame construction with white gloss Dibond panels to keep them as lightweight as possible.

Being custom, the list of options is extensive and we are fully open to adding new functions you may require. All custom machine will feature our race proven computer control and safety features

Please email us at [enquiries@eec-ltd.com](mailto:enquiries@eec-ltd.com) to discuss your requirements.



# Custom Intelligent Fuel Bowser



UK  
CA | CE



# f-POD rallye



## Innovation

EEC Performance Systems developed a self-contained, fuel batch pumping system, designed to accurately deliver repeatable amounts of fuel to your rally and race cars.

The f-POD Rallye connects directly to all generic fuel drums using EEC's Safety Drum Adaptor and with simple programming, the operator can pump a pre-selected volume of fuel in litres.

Ideal for teams with limited truck space, for vehicles with very large fuel tank capacities, one make championships where identical fuel loads are required, race schools and many other applications.

Also, by reversing the hoses this makes the f-POD Rallye an effective pumping out system.

## Accuracy

The f-POD Rallye employs the highest quality components. This ensures fuel delivery into your cars' fuel cell, within a repeatable accuracy of 0.1 litre, which means you can always be confident with your race fuel calculations.

## Safety

The f-POD Rallye is constructed with total safety a priority. All of the electronic components and battery are housed in sealed cabinets to eliminate any possible spark risk.

The pump utilises an explosion proof motor and antistatic bonding leads are included to keep the drum, car and the f-POD Rallye all at the same potential.

High quality 210 hoses are included in our price! The system is totally sealed to prevent vapour loss. the f-POD Rallye is housed in a substantial heavy duty flight case.

The f-POD Rallye is CE & UKCA marked and meets all current directives.

# Fuel Dispensing Rig

## Specification Includes

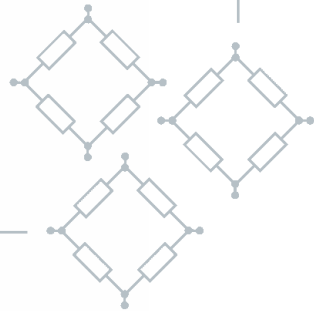
- 50 Litre/min Flow Rate
- ATEX Rated Flow Meter & Pickup
- Explosion Proof Pump Motor
- Internal 12VDC Rechargeable Battery
- High Quality 210 Hoses
- Heavy Duty Flight Case Housing
- Auxiliary Battery Socket
- 470w x 620d x 700h mm
- Gross Weight 60kg

## Options

- Dry Break Couplings
- Safety Drum Adaptor



*“Delivers accurately  
measured batches of  
fuel to your car  
direct from the drum!”*



# f-POD

## safety drum adaptor

### Innovation

EEC Performance Systems believe their Safety Drum Adaptor is a major step forward in preventing spark related garage fires.

With both Flow and Vent pipes totally sealed and the use of an ATEX approved flame arrester vent, the transfer of fuel between drum and bowser has never been safer!

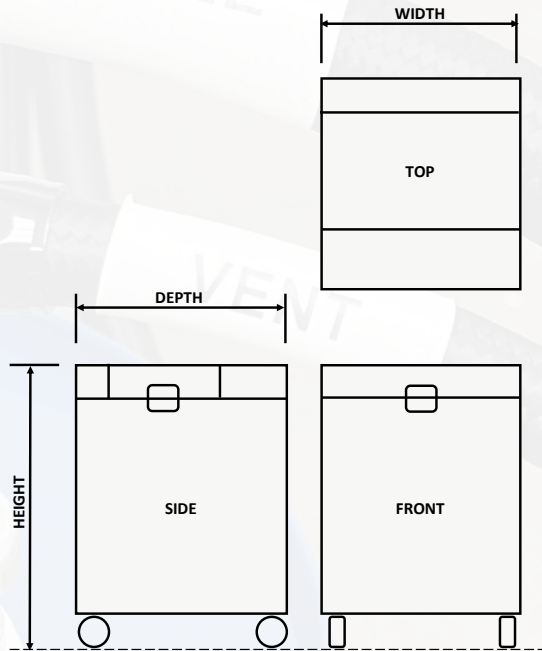
It features a telescopic pick up tube making it suitable for 50, 60 and 200 litre fuel drums. There is a non telescopic version available for 25 litre drums.

All versions are available with or without Staubli Dry Break connectors.



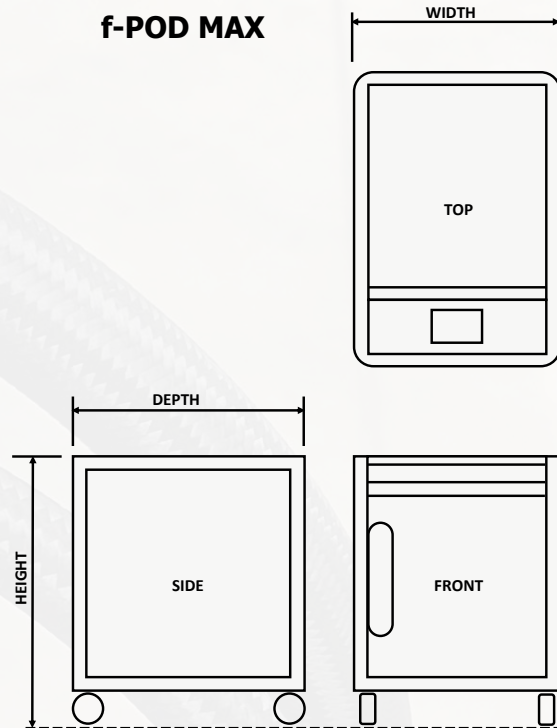
# Fuel Bowser - Weights & Dimensions

**f-POD ECO & ULTRA**



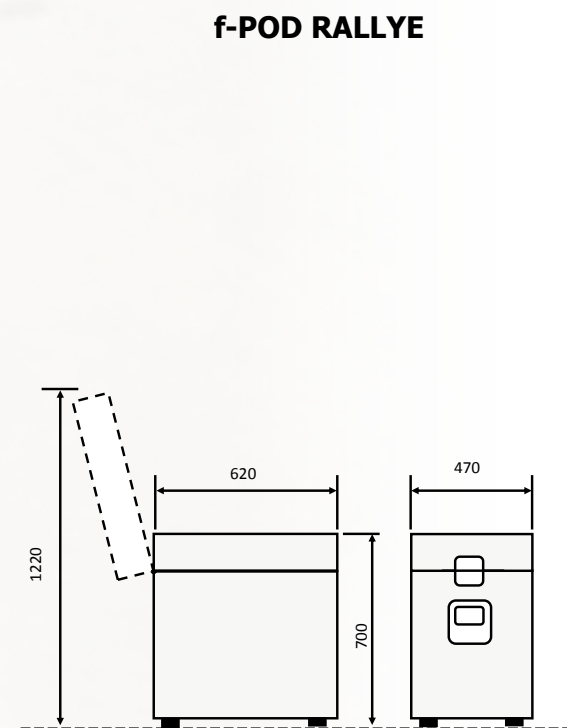
Capacity Kg	w mm	d mm	h mm	Weight kg	
				ECO	ULTRA
80	660	700	960	93	95
100	660	700	1060	96	100
145	660	960	1060	119	121

**f-POD MAX**



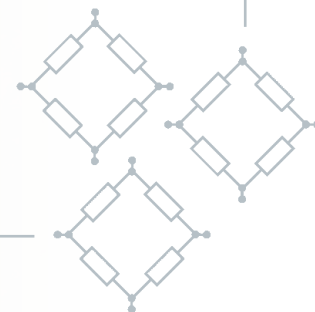
Capacity Kg	w mm	d mm	h mm	Weight kg MAX
80	700	800	1000	From 105

**f-POD RALLYE**



w mm	d mm	h1 mm	h2 mm	Weight kg RALLYE
470	620	700	1220	60

Weights, Dimensions & Specification May Vary. E&OE



# e-POD

## fuel timer



### Innovation

Designed with simplicity in mind, we have ensured our new E-POD fuel timer is easy to operate, read and review previous stored times.

The E-POD is ATEX rated, housed in a rugged billet anodised aluminium housing with a sealed membrane keyboard. The unit is powered by two AAA batteries which are accessed through an o'ring sealed back panel and has no external messy cables.

The operation of the timer is totally automatic, starting and stopping accurately as the fuel nozzle is connected and disconnected from the car.

During fuelling, the high contrast OLED display shows an ascending count in tenths of a second, making the operators job child's play. When the nozzle is removed from the car, the timer stops instantly displaying the total time of the process and a calculated volume in litres or gallons, or power in Megajoules.

### Logging

The timer stores the last 10 timings which can be reviewed instantly at any time. There is also an option to send the fuel timings back to the garage wirelessly to an additional system that monitors and logs fuel time, fuel rig weight, fuel temperature, air temperature etc.

### Compatibility

We currently have versions available for the Staubli SAF45, Krontec RFC89 & Red Head couplings.

As the Krontec RFC89 does not have any external moving parts to trigger the timer from, we took advantage of Krontec's option to have a proximity sensor on the car side of the coupling.

We use this sensor to trigger a miniature radio transmitter in the car which sends signals to start and stop the fuel timer when the coupling is made. We have provided a signal feed through from this sensor for those teams who also require to see its output for other uses.

### Safety

The E-POD fuel timer is CE, UKCA & ATEX marked and meets all current directives.



# Intelligent Fuel Timer

## Specification Includes

- High Contrast OLED Screen
- Elapsed Fuel Time to 0.1s
- Calculated Volume (Litres or Gallons) or Power (MJ)
- Last 10 Timings Recorded
- Heavy Duty Aluminium Construction
- Tactile Membrane Keyboard
- Sealed to IP66
- ATEX Rated

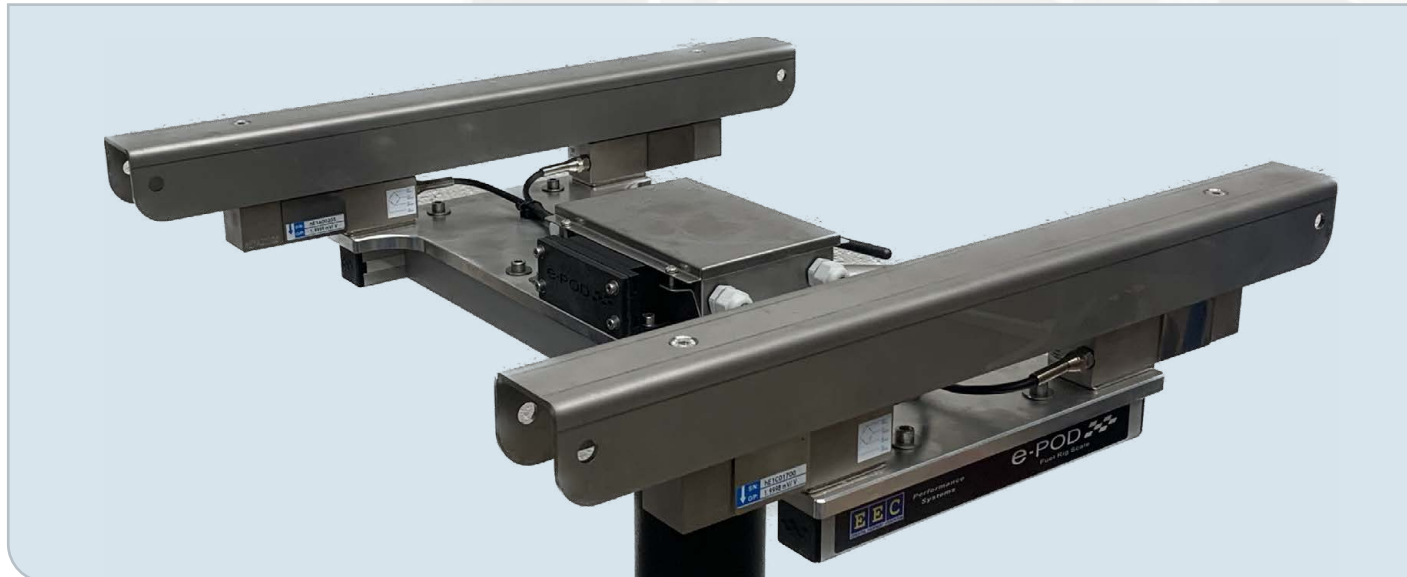
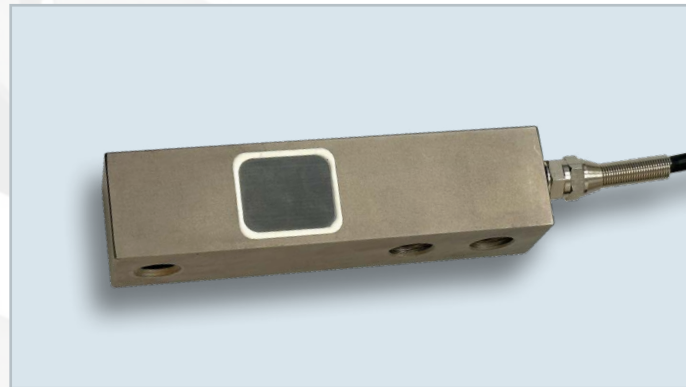
## Options

- Wireless Data Transmission  
as part of the Endurance Fuel Rig System
- Tough Waterproof Travel Case



# e-POD

## fuel rig scale



### Innovation

EEC Performance Systems identified the need for a purpose built fuel rig scale, designed as an alternative to the 'adapted parcel scales' currently available from some rig manufacturers.

With 35 years experience in the weighing machine industry, EEC designed a scale specifically for the job, choosing the most suitable components available.

The E-POD digital indicator features a high contrast LCD display with large 22mm digits, making it very easy to read in bright sunlight.

It also self illuminates when an active weight is detected making it perfect for night races.

The internal rechargeable battery has a minimum life of 48 hours making the E-POD essential equipment for 24h races!

Units can be changed from kg to lbs at the touch of a button.

### Accuracy

The E-POD fuel rig scale employs the highest quality weighing components.

Using 4 x high capacity stainless steel loadcells and a precision signal summing board means the side loadings caused by the rigs heavy fuel delivery hose and couplings are not an issue.

Also, there is a simple zero calibration routine available to the operator to ensure each time the rig is assembled and empty of fuel, true zero can be achieved.

### Construction

The E-POD fuel rig scale has an aluminium plate to which the loadcells and summing board are mounted.

As standard the scale is fitted with stainless steel upper and lower rails designed to fit most fuel rig tanks on the market, including ATL, Caseliner and Premier.

For anyone competing at Le Mans, the lower rails can easily be removed allowing the scale to be clamped directly to the ACO permanent fuel stands.

We can also supply a centrally mounted 'spider' frame version. Please contact us for more details or for any special requirements you may have.

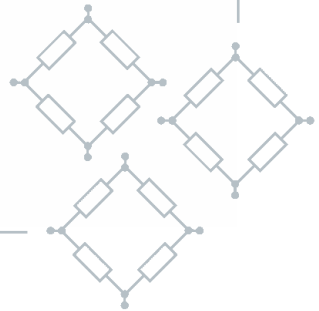
# Endurance Fuel Rig Scale

## Specification Includes

- Large 22mm Illuminated LCD Display
- Internal Rechargeable Battery
- Minimum 48 Hours Battery Life
- Switchable Units kg/lbs
- 4 x Balanced Precision IP66 Loadcells
- Stainless Steel Sealed Junction Box
- Aluminium Scale Plate
- Stainless Steel Channels
- 300kg x 0.1kg Metric Capacity
- 660lb x 0.2lb Imperial Capacity
- 558w x 555d x 235h mm
- Shipping Weight : 17kg

## Options

- Custom 'Spider' Central Mounting Frame
- Other Capacities
- Wireless Data Transmission  
(as part of the Endurance Fuel Rig System)



# e-POD

## wireless fuel stop system



Professional  
**MotorSport**  
WORLD EXPO 2023  
**AWARDS**

**Powerful Encrypted 433MHz & 2.4GHz Transmitters**

### Innovation

EEC Performance Systems have developed a completely wireless endurance fuel rig monitoring and logging system.

The E-POD fuel stop system is completely modular, which means you only buy the items you require, with the option to buy other modules in the future.

### Modules

All modules are completely wireless & currently include:

- Fuel rig scales to monitor and record fuel weight
- Evo Fuel timer which receives target times from the base station and can display other live data simultaneously, including airlock and deadman's strategies
- Deadman's position sensor
- Deadmans timer
- Tank volume sensor
- Fuel temperature
- Ambient air temperature
- IMSA flowmeter display interface

If you already have rig scales, we can supply an A/D module to convert them to wireless for you!

The modules report back to a 15" full colour touch screen display, designed to be mounted into your garage walling, adjacent to the fuel rig.

The screen displays the current weight of fuel in the rig tank as well as fuel and air temperature. It also shows a comprehensive record of the last fuelling stop.

The logging is a semi-automatic procedure, initiated with the press of one button to record the fuel weight before fuelling and completed with the press of another button to confirm the end of the process.

There is also a simple procedure to record the amount of any fuel in the vent hose.

### Logging

The system records the location, car id, date and time each fuelling stop. Unlimited fuelling stops are recorded on an internal totals database which can be displayed or downloaded any time.

There is remote access as standard for engineers to view from their laptops or the data station!

### Accuracy

The E-POD System utilises our track proven ATC system, which automatically compensates for any weight variation at whatever race circuit you are at worldwide.

There is a simple zero calibration routine available to the operator ensuring each time the rig is assembled and empty of fuel, a true zero can be achieved.

# Wireless Fuel Stop System

## Specification Includes

- Large 15" Full Colour Display for garage Wall Mounting
- Touch Screen Keyboard
- Wifi & LAN Connection to Local Network
- Remote access from the Engineers Data Station
- Switchable Units kg/lbs - Degrees C/F
- IP66 Front Panel
- Heavy Duty Aluminium Construction

## Modules

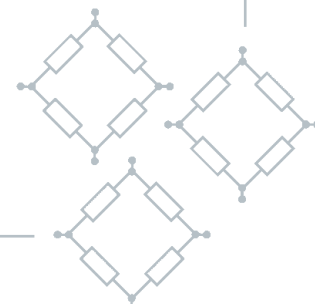
- Wireless Fuel Rig Scale
- Wireless Automatic Fuel Timer & Live Data Display
- Wireless Deadman's Sensor & Timer
- Wireless Volume Sensor
- Wireless Fuel Temperature
- Wireless Ambient Air Temperature
- Wireless IMSA & WEC Flowmeter Interface & Display
- Powerful 433MHz & 2.4GHz Transmitters
- Typical battery life: 7-21 days
- (See individual Modules for their Specifications)

## Options

- Wireless Rig Scale Adaptor for existing Rig Scales
- Custom Sensors



Date	Car	Circuit	Weight	Time	Volume	Fuel Temp.	Air Temp.	Deadmans (Avg)	Deadmans Handle Time
15/06/2024 20:58:04	#123	LE MANS	69.0 kg	30.7 s	92.0 L	17.5 C	25.3 C	100 %	31.2 s
15/06/2024 20:18:15	#123	LE MANS	69.5 kg	30.8 s	92.6 L	19.8 C	27.9 C	100 %	32.4 s
15/06/2024 19:40:39	#123	LE MANS	69.4 kg	30.8 s	92.5 L	20.1 C	29.5 C	100 %	31.4 s
15/06/2024 18:53:59	#123	LE MANS	69.1 kg	30.7 s	92.2 L	21.4 C	33.5 C	100 %	31.2 s
15/06/2024 18:13:09	#123	LE MANS	69.6 kg	30.9 s	92.8 L	21.2 C	32.1 C	100 %	31.4 s
15/06/2024 17:28:22	#123	LE MANS	69.3 kg	30.8 s	92.4 L	21.8 C	32.4 C	100 %	31.3 s
15/06/2024 16:42:36	#123	LE MANS	69.1 kg	30.7 s	92.2 L	22.2 C	34.5 C	100 %	31.5 s



# Wi-POD 1

wireless corner scales



## Innovation

EEC Performance Systems has designed a solution to provide an intelligent wireless corner scales system second to none. The full colour, inspired graphical layout, means using the Wi-POD is child's play.

The Wi-POD 1 features single loadcell configuration, designed for lightweight single seaters and budget conscious teams.

The Wi-POD can run multiple car setups, recording a data history which is available to view instantly on screen and is downloadable via USB for further analysis and record keeping.

## Accuracy

The Wi-POD employs the highest quality weighing and wireless components, ensuring greater accuracy over a longer range to its competitors. Each corner has a maximum capacity of 800kg to an accuracy of 200g.

Our unique Automatic Track Compensation system, ATC, ensures the Wi-POD weighs your vehicle accurately at any circuit in the world without the need for local recalibration.

## Construction

Each corner scale is machined from a solid billet of 6061 grade aluminium with a bead blasted anodised finish. The 150mm long adjustable stainless steel feet run in aircraft industry steel 'Keensert' threaded inserts to ensure long life. Power is from two AAA dry-cell batteries per corner.

The Wi-POD is usually supplied with a Microsoft Windows tablet PC with software and license preloaded and a USB stick style receiver.

Alternatively, the Wi-POD software can be loaded onto any Microsoft Windows 10 or later device and is supplied with a USB stick receiver and a single device licence.



2020 Winners in both categories for

**DATA & MEASUREMENT**  
and  
**INNOVATION**

# Wireless Corner Scales

## Specification Includes

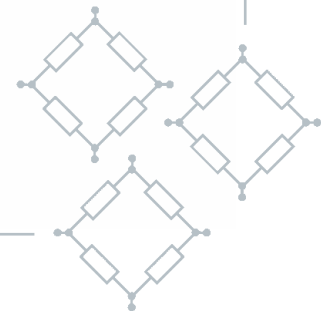
- 800kg x 200g Capacity Corner
- 3200kg System Capacity
- 6061 Billet Aluminium Body & Cross
- 5mm Thick 316 Stainless Steel Load Plates
- Heavy Duty Stainless Steel Adjustable Feet
- Bead Blasted Anodised Finish
- Integral Bubble Spirit Level
- Centre of Gravity Calculation
- Onscreen Set Up Memory
- Downloadable/Printable Reports

## Options

- Flightcase



*“features single loadcell configuration designed for lightweight single seaters and budget conscious teams”*



# Wi-POD 3

wireless corner scales



## Innovation

EEC Performance Systems engineers have consulted with experienced race engineers to provide an intelligent wireless corner scales system second to none.

The Wi-POD 3 features a triple loadcell configuration resulting in minimal deflection errors demanded by discerning race engineers.

The Wi-POD can run multiple car setups, recording a data history which is available to view instantly on screen and is downloadable via USB for further analysis and record keeping.

## Accuracy

The Wi-POD employs the highest quality weighing and wireless components, ensuring greater accuracy over a longer range to its competitors.

Each corner has a maximum capacity of 1000kg to an accuracy of 200g.

Our unique Automatic Track Compensation system, ATC, ensures the Wi-POD weighs your vehicle accurately at any circuit in the world without the need for local recalibration.

## Construction

Each corner scale is machined from a solid billet of 6061 grade aluminium with a black anodised finish. The 150mm long adjustable stainless steel feet run directly into the loadcells to ensure long life. Power is from two AAA dry-cell batteries per corner.

The Wi-POD is usually supplied with a Microsoft Windows tablet PC with software and license preloaded and a USB stick style receiver.

Alternatively, the Wi-POD software can be loaded onto any Microsoft Windows 10 or later device and is supplied with a USB style receiver and a single device licence.



2020 Winners in both categories for

**DATA & MEASUREMENT**  
and  
**INNOVATION**



# Wireless Corner Scales

## Specification Includes

- 1000kg x 200g Capacity Corner
- 4000kg System Capacity
- 6061 Billet Aluminium Body
- 5mm Thick 316 Stainless Steel Load Plates
- Heavy Duty Stainless Steel Adjustable Feet
- Black Anodised Finish
- Integral Bubble Spirit Level
- Centre of Gravity Calculation
- Onscreen Set Up Memory
- Downloadable/Printable Reports

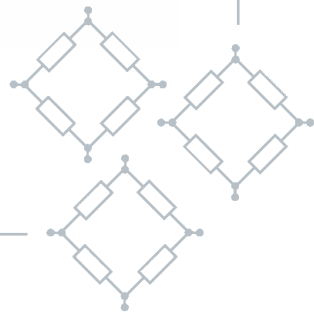
## Options

- Flightcase

UK  
CA | CE

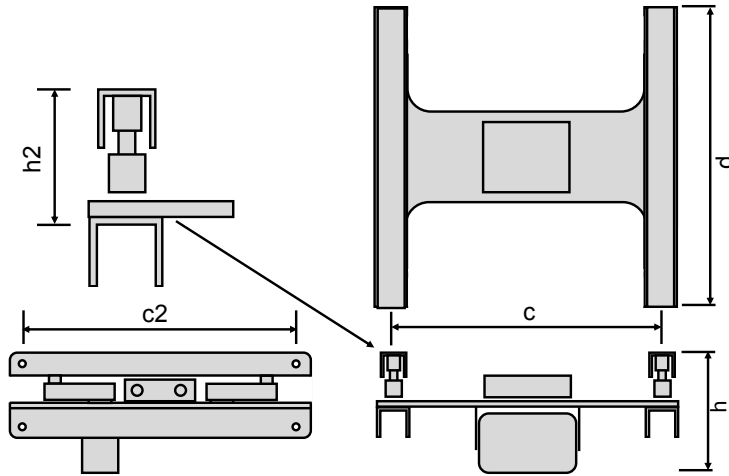


*“ triple loadcell configuration resulting in minimal deflection errors demanded by discerning race engineers.”*



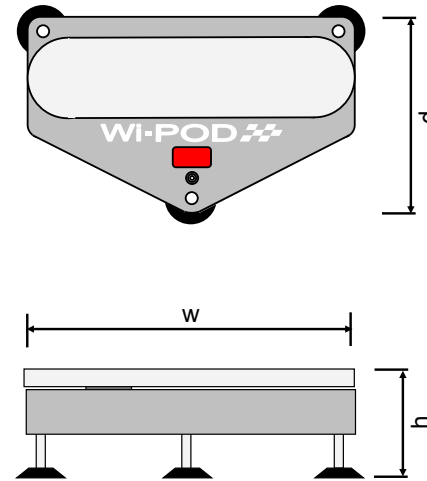
# Weights & Dimensions

**f-POD E-POD**



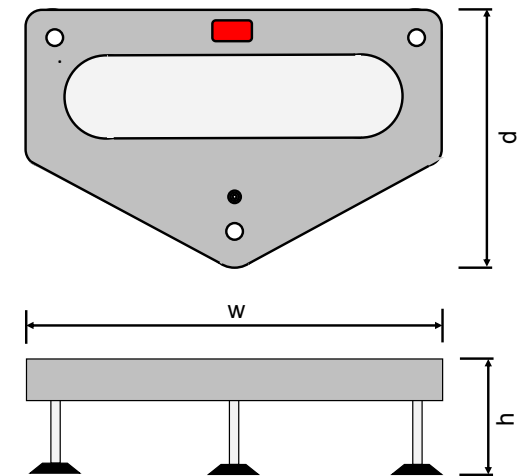
w	d	c	c2	h	h2	Weight kg
mm	mm	mm	mm	mm	mm	RIG SCALE
470	555	495	520	235	100 min	17

**Wi-POD 1**



Type	w	d	h	Weight kg
	mm	mm	mm	
Wi-POD 1	325	210	180 max	7.8
Wi-POD 3	400	250	150 max	10.8

**Wi-POD 3**



Weights, Dimensions & Specification May Vary. E&OE

# Contact

## Dealer Network

### **Czech Republic—Caseliner S.R.O.**

Nad Jezerem 568  
252 50 Vestec  
Czech Republic  
Tel: +420 244 463 151  
Email: info@caseliner.com

### **Germany—ISA Racing GmbH**

August-Horch Strasse 11  
56736 Kottenheim  
Germany  
Tel: +49 2651 / 96250  
email: info@isa-racing.com

### **USA—PH Performance Products**

116 Clipper Lane  
Mooresville NC 28117  
USA  
Tel: +1 704 966 2829  
email: staylor@phperformanceproducts.com

### **Denmark—Gunnar Aaskov Motorport**

CR 116 232  
Kornmarken 2, Gravens  
6040 Egtev  
Denmark  
Tel: +45 40 55 32 99  
email: ga@aaskov-motorsport.dk

### **Japan—Enable Inc.**

Autoparts Department  
Seisho Technical Centre  
224-1 Haneo Odawara-shi  
Kanagawa, Japan  
256-0804  
Tel: +81 465 46 7408

### **UK—CCM Racing LLP**

3 Church Farm Barns  
Holton  
Oxford  
United Kingdom  
Tel: 01865 875972  
email: ccmracing@msn.com

### **France—One Line**

La Ressence  
RD942 - Route de Lourmarin  
84480 Bonnieux  
France  
Tel: +33 (0) 614 98 86 29  
email: tl@one-line.net  
www.one-line.net

### **Sweden—Mtech Workshop AB**

Industrivagen 21  
151 38 Sodertalje  
Sweden  
Tel: +46 (0) 8 550 39 997  
email: magnus@mtechworkshop.se

### **UK—Interspares Motorsport Ltd**

Unit 4 Rockfort Ind Est  
Wallingford  
Oxon  
United Kingdom  
Tel: 01491 827460  
email: Alasdair@interspares.com

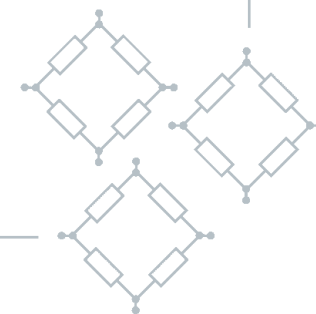
# EEC Performance Systems

Unit C6 Optimus Way, Leicester, LE3 8JR. United Kingdom

Tel: +44 (0) 116 232 2335

email: enquiries@eec-ltd.com

www.eec-ltd.com





*Performance  
Systems*



## Essential Equipment Consortium Ltd

Unit C6 Optimus Way, Leicester, LE3 8JR. United Kingdom

Tel: +44 (0) 116 232 2335

email: [enquiries@eec-ltd.com](mailto:enquiries@eec-ltd.com)

[www.eec-ltd.com](http://www.eec-ltd.com)